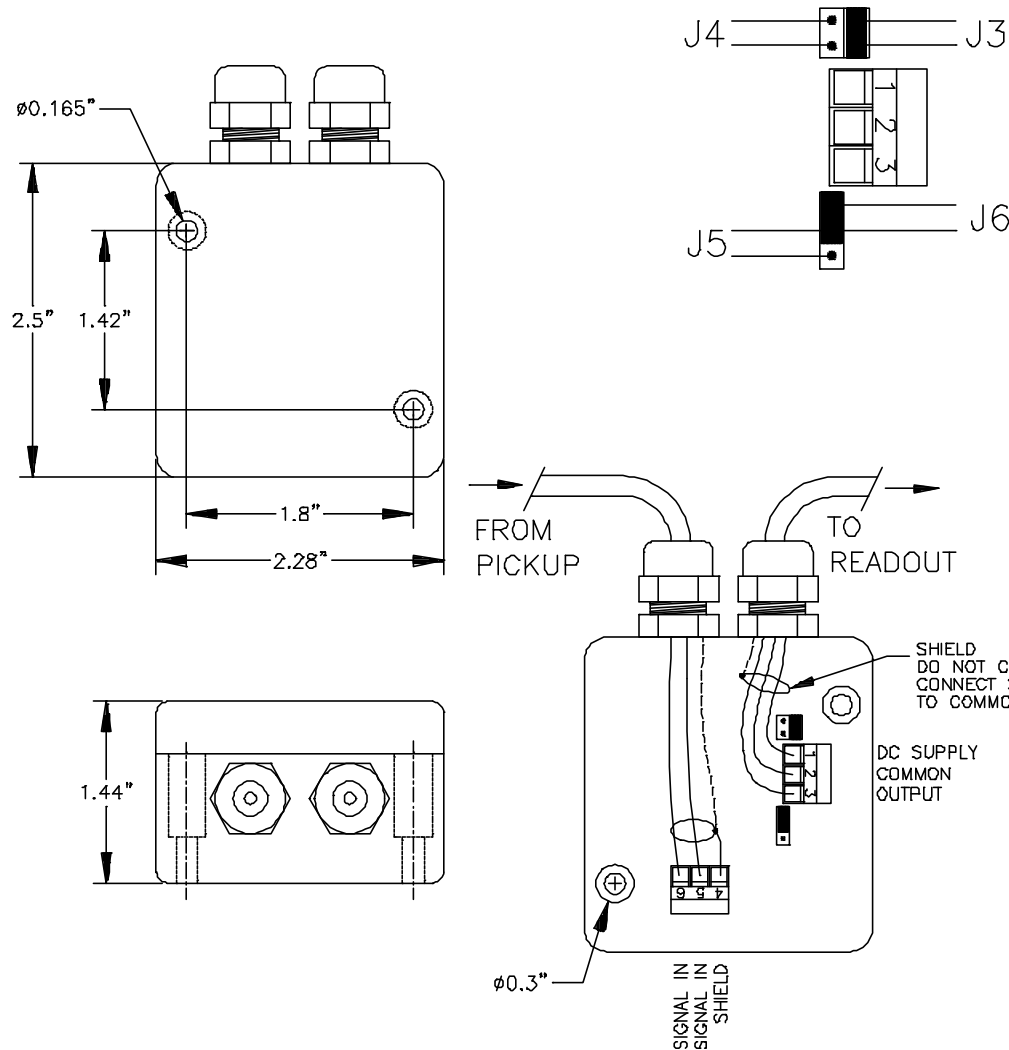


VTEG CARRIER FREQUENCY PICKUP AMPLIFIER

REV	DESCRIPTION	DATE	APPR. BY
A	INITIAL RELEASE	11-07-94	A.W.



JUMPER SETTING & TERMINAL

VERSION	J3	J4	J5	J6	TERMINAL
2-WIRE	OFF	ON	OFF	OFF	1,2
3-WIRE ACTIVE NPN	ON	OFF	OFF	ON	1,2,3
3-WIRE ACTIVE PNP	ON	OFF	ON	OFF	1,2,3
3-WIRE PASSIVE NPN	OFF	OFF	OFF	ON	1,2,3

DEFAULT ---->

TECHNICAL DATA

SUPPLY VOLTAGE: 7 - 29VDC
 CURRENT CONSUMPTION: < 4mA
 OUTPUT SIGNAL: FREQUENCY, MAX 3000Hz
 OPERATING TEMP.: 0°F - +175°F (-20°C - +80°C)
 CABLE: 2 OR 3-WIRE SHIELDED, MAX Ø0.25"

VOLTAGE LEVELS NPN/PNP (3-WIRE)

ACTIVE OUTPUT NPN

HIGH: $V_{high} > V_{supply} - 0.6V - (2.6Kohm * I_{out})$
 LOW: $V_{low} > 0.6V + (1.3Kohm * I_{out})$

PASSIVE OUTPUT NPN (OPEN COLLECTOR)

$V_{high} = V$
 LOW: $V_{low} < 0.6V + (1.3Kohm * I_{out})$
 V IS THE APPLIED VOLTAGE AT OUTPUT MAX 29V.

ACTIVE OUTPUT PNP

HIGH: $V_{high} > V_{supply} - 0.6V - (150ohm * I_{out})$
 LOW: $V_{low} = CUT OFF$

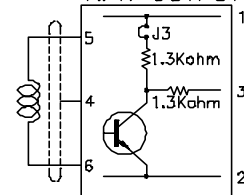
PASSIVE OUTPUT PNP (OPEN COLLECTOR)

HIGH: $V_{high} > V - 0.6V - (150ohm * I_{out})$
 LOW: $V_{low} = CUT OFF$
 V IS THE APPLIED VOLTAGE AT OUTPUT MAX 29V.
 $I_{max} = 60mA, P_{max} ON R_s = 1W, R_s = 150ohm$

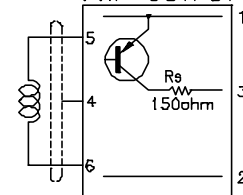
CURRENT LEVEL (2-WIRE)

HIGH: $I_{high} > 2.2mA$
 LOW: $I_{low} < 1.4mA$

NPN OUTPUT



PNP OUTPUT



THIS PRINT, INCLUDED THE INFORMATION CONTAINED IN IT, IS THE PROPERTY OF A.W.COMPANY. IT IS CONSIDERED PROPRIETARY IN NATURE AND MAY NOT BE USED OR DISCLOSED OUTSIDE OF A.W.COMPANY EXCEPT UNDER PRIOR WRITTEN AGREEMENT. ANY MODIFICATIONS MADE TO OR COMMENTS WRITTEN ON THIS DRAWING BY UNAUTHORIZED PERSONNEL WILL VOID THIS DRAWING

AW-COMPANY
 FRANKSVILLE, WI 53126

TITLE: VTEG PICKUP AMP.
 DRAWING NUMBER: VTEG301A
 DRAWN BY: GUS SKIAKER
 DATE: 11-07-94 CHECKED BY: A.W.
 PAGE: 1 OF 1 SCALE: NONE