

# CAPM-15 High Temperature Pickup System

## Description:

The **CAPM-15 High Temperature Pickup System** consists of a **CAPM-15/AMP** signal amplifier module and the **CP-30** high temperature carrier frequency pickup.

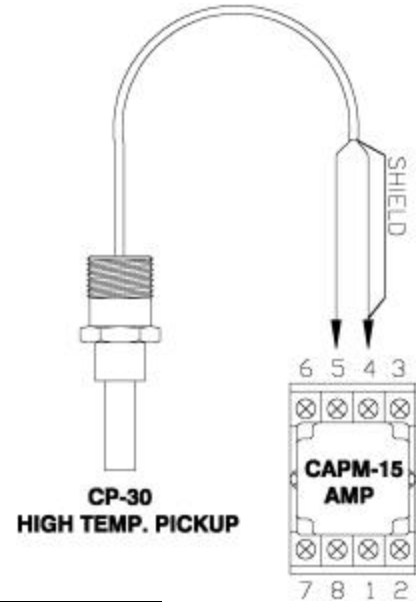
The **CAPM-15/AMP** will work on a supply voltage between 10 Volt DC and 30 Volt DC. The module is protected against reversed polarity on the voltage supply.

The length of wire between the **CP-30** and the **CAPM-15/AMP** module should not be extended over 20 feet.

The **CP-30** is supplied with a 7 foot cable only.

## Technical Data:

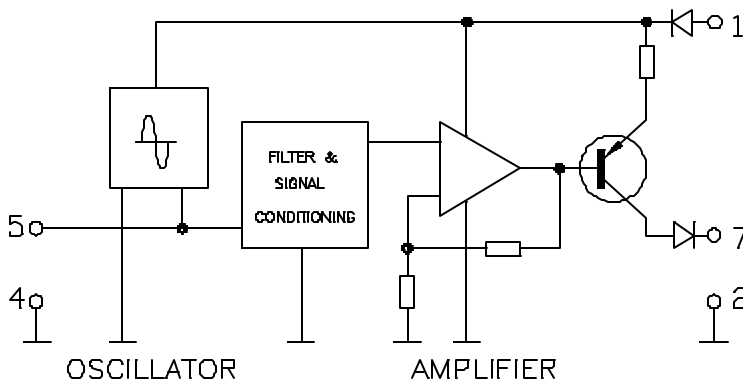
Supply Voltage .....: 10 to 30 Volt DC  
 Supply Current .....: 9 mA @ 15 Volt, max 18mA  
 Signal Output .....: Square wave, Supply minus 2-3 V, peak-to-peak  
 Frequency Output : Flow dependent, up to 2000 Hz  
 Temperature range: **CAPM-15/AMP** : Up to **160° F/70° C**  
                           **CP-30**.....: Up to **400° F/205° C**



## Connections:

- 1 - +10 to 30 Volt DC supply voltage
- 2 - Ground for supply and signals
- 3 - Not used
- 4 - Signal from pickup & shield wire
- 5 - Signal from pickup
- 6 - Not used
- 7 - Frequency signal output
- 8 - Not used

<u>AW Company wire color code:</u>	
Supply Voltage:	Red
Ground:	Black
Signal:	White

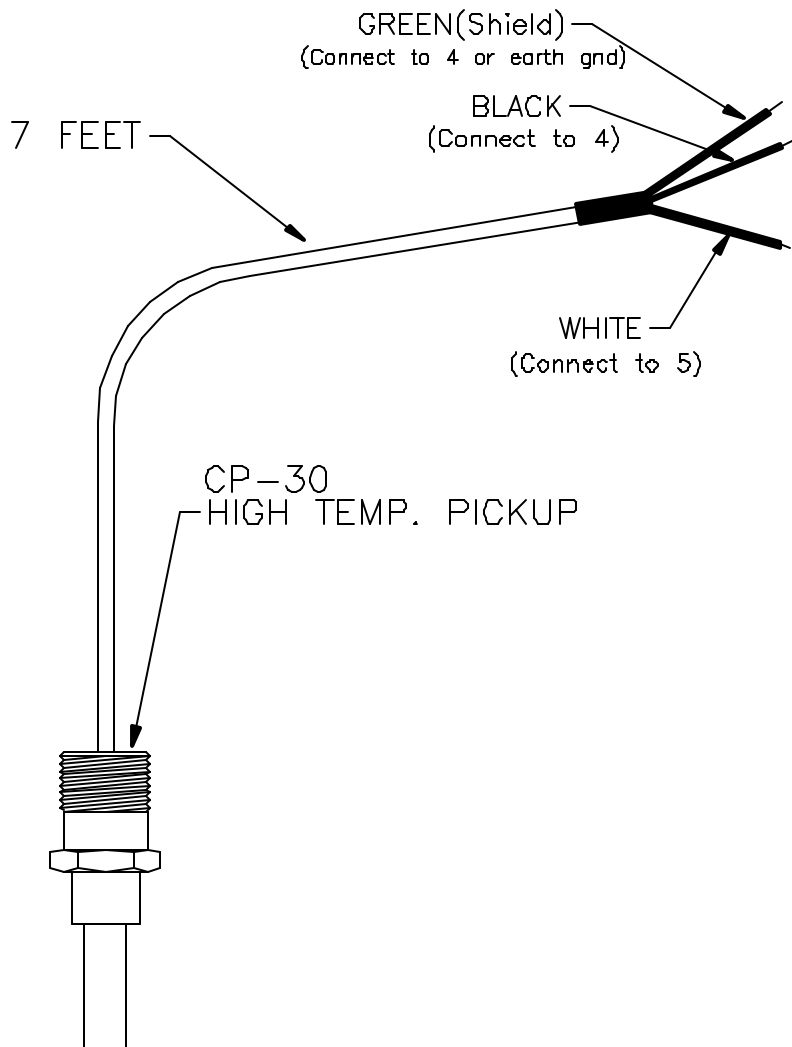


**OUTPUT:**  
 13V. peak-peak  
 (4.2VRMS) @ 15V SUPPLY

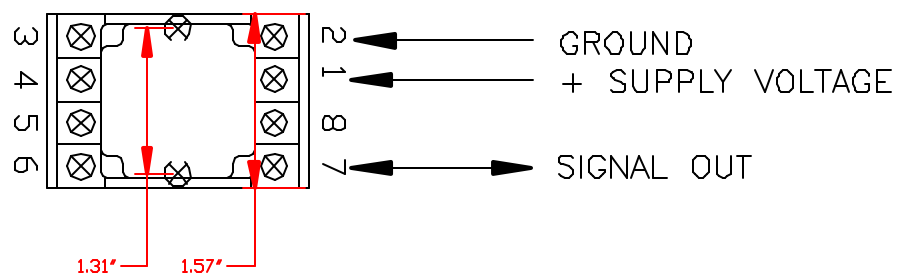
**Note: If signal does not go to ground, connect external resistor, 5 K-10 Kohm, between input and ground of monitoring equipment.**

# CAPM-15 SYSTEM

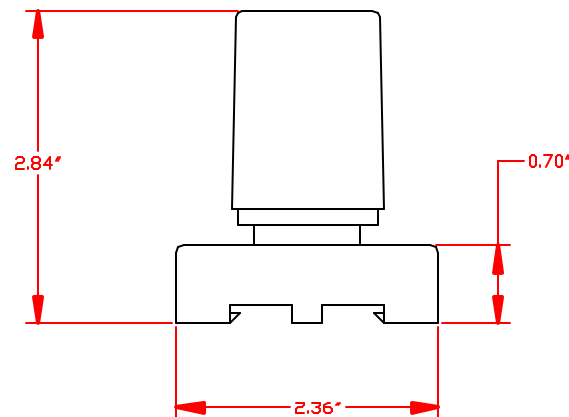
GREEN SHIELD WIRE CAN BE CONNECTED TO TERMINAL 4 WITH THE BLACK WIRE, OR DIRECTLY TO AN EARTH GROUND



SUPPLY VOLTAGE: 10-30 VDC  
 SUPPLY CURRENT: ~9mA @ 15V, MAX 18mA  
 SIGNAL HIGH: ~13V PEAK @ 15V SUPPLY  
 SIGNAL LOW: ~0V  
 DUTY CYCLE: ~50%  
 MINIMUM FREQUENCY: 0.5 Hz  
 LOAD: >3 Kohm



## CAPM-15 AMPLIFIER



THIS PRINT, INCLUDING THE INFORMATION CONTAINED IN IT, IS THE PROPERTY OF AW COMPANY. IT IS CONSIDERED PROPRIETARY IN NATURE AND MAY NOT BE USED OR DISCLOSED OUTSIDE OF AW COMPANY, EXCEPT UNDER PRIOR WRITTEN AGREEMENT. ANY MODIFICATIONS MADE TO OR COMMENTS WRITTEN ON THIS DRAWING BY UNAUTHORIZED PERSONNEL WILL VOID THIS DRAWING.



**AW COMPANY**  
 PRINCETONVILLE, IN 47371

TITLE: CAPM-15 SYSTEM

DRAWING NUMBER: CP15400A

PART NUMBER: —

DATE: 03-01-02

REV: A

DRAWN BY: SHANE WILSON

CHECKED BY: C.H.

PAGE 1 OF 1

SCALE: NONE