

MAINTENANCE GUIDE FOR THE JV-60 KL FLOWMETER

Cleaning, inspecting or repairing an JV-60 KL gear flow meter is easily accomplished by following the procedures below.

1. Remove the pickup sensor (not shown) from the flow meter body (5).

2. Remove the hex bolts (6) with a 3/16" key wrench.

3. Re-engage 2 opposing bolts diagonally from each other by a few threads to avoid stress on the shafts and locator pins during housing separation.

4. Holding the upper housing (5), gently tap the opposing bolts (6) to separate the lower housing (1). **Do not use chisels or screwdrivers to split and pry apart the housings - this may damage the gears and locating pins.**

5. After separation, inspect the gears (3) and bearings (7). Inspect and clean the gears taking care not to dislodge the bearings (7) located in the housing. The meter should be returned to the factory for any bearing repairs. Note: Meters purchased before May, 2001 may have shims installed. Refer to drawing #JVM6900B for this model.

6. After cleaning, all parts can be reinserted into their previous positions. Check for free & easy rotation.

7. Replace O-ring (4) if deformed.

8. Keep meter housings parallel during reassembly and align index marks (8). Both locating pins (2) must be in place.

9. Replace hex bolts and slowly tighten to at least 15 Nm. (This is hand tight). Do not force the housing closed. Do not use a hammer. Over tightening will not cause damage but may restrict operation if internal surfaces are not completely clean.

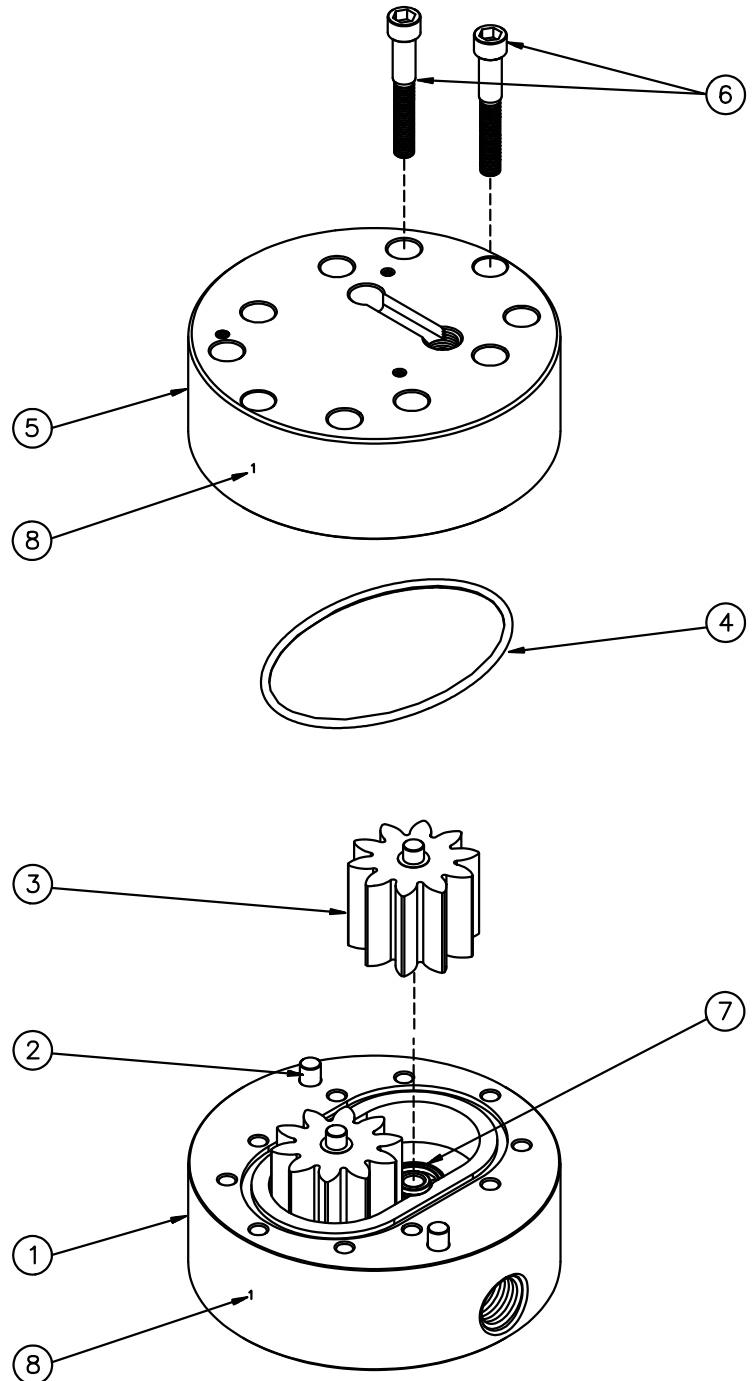
10. After reassembly, gently blow air into meter so gears spin. This should be clearly audible given a moderate background noise level.

11. Clean any debris from the pickup port & hand tighten the pickup sensor. Avoid over tightening as this may damage the meter.

Do not over tighten sensor *

The bearings should be lubricated prior to storage.

Never allow contact with water without immediately drying and lubricating after use.



CROSS REFERENCE GUIDE FOR JVA-60 KL & JVM-60 KL SPARE PARTS

1. Lower Housing
Pt.# JLH-60KL Aluminum Body
Pt.# JLH-60KL-SS Stainless Body

2. Tool Steel Locating Pins
Pt.# LP-JV-60KL

3. 17-4 Stainless Steel Gear
Pt.# JGR-60KL

4. O-ring
Pt.# COV-JVA-60KL Black Viton O-ring
Pt.# COT-JVA-60KL White Teflon O-ring

5. Upper Housing
Pt.# JUH-60KL Aluminum Body
Pt.# JUH-60KL-SS Stainless Body

6. HEX Socket Cap Screw
Pt.# JSC-60HP

7. Ball Bearings
Pt.# BB-JVA-60KL

8. Index Marks

