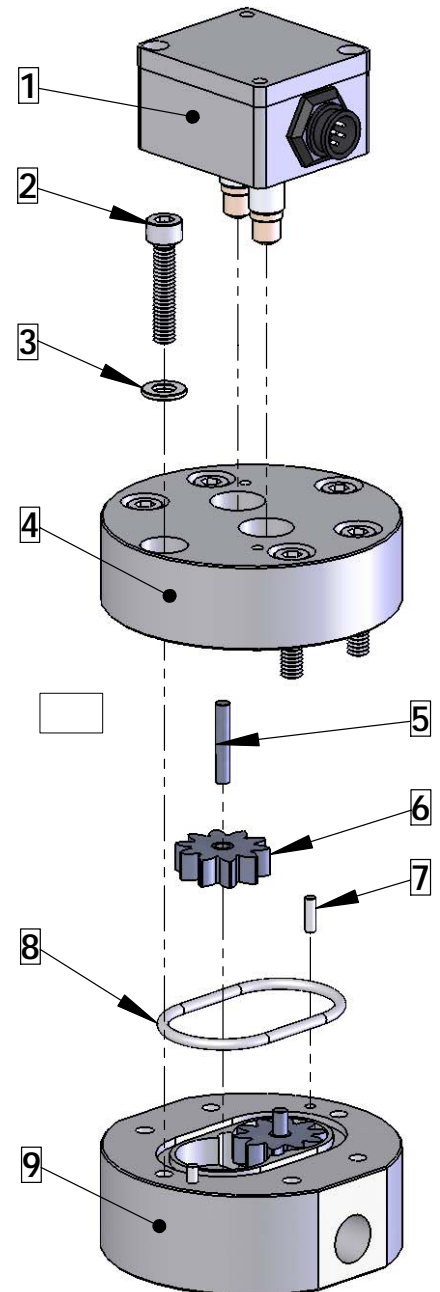


MAINTENANCE GUIDE FOR THE JV-XXCG SERIES FLOW METER

Cleaning, inspecting or repairing a JV-CG Series gear flow meter is easily accomplished by following the procedures below.

1. Remove the Sensor (1) from the flow meter body Upper Housing (4). Using a 3mm hex key, loosen the 2 mounting screws inside the sensor.
2. The JV-30 size and smaller use M6 Bolts (2), loosen them using a 5mm hex key. The JV-60 uses M10 Bolts (2), loosen them using an 8mm hex key. Keep the 2 opposing bolts near the Locating Pins (7) engaged by a few threads to avoid stress on the shafts and the locating pins during housing separation. **Please note the orientation of the Upper and Lower housings with respect to each other so that the meter is reassembled the same way.**
3. Holding the Upper Housing (4), gently tap on the top of the 2 opposing bolt heads to separate the Upper Housing (4) from the Lower Housing (9). **Do NOT use chisels or screwdrivers to split and pry apart the housings. This can cause damage to the meter bodies and meter internal parts.**
4. After separation, remove, clean and inspect the gears (6) and shafts (5). Clean out the o-ring groove, shaft holes and meter cavity.
5. After cleaning all parts completely, the Gears (6), Shafts (5) and Locating Pins (7) can be reinserted. Check for free and easy rotation of the gears.
6. Replace the O-Ring (8). Teflon o-rings should always be replaced. Viton o-rings can be reused if they are not damaged.
Note: JVM-60CG Flow meters have 2 o-rings per meter.
7. During reassembly keep the meter housings as parallel as possible. Make sure the housings are orientated the same way they were prior to disassembly.
8. Replace the Washers (3) and the Bolts (2). Torque the bolts to 15Nm for the 12, 20 and 30 size meters and 30Nm for the 60 size meters. Do not force the meter housings together. Do NOT use a hammer or other such device. Over tightening will not cause damage to the meter, but may fatigue the bolts and/or restrict the operation if internal surfaces are not completely clean.
9. After reassembly, gently blow air through the meter so the gears spin. This should be clearly audible given a moderate background noise level.
10. Clean any debris from the pickup holes before remounting the sensor (1) to the Upper Housing (4). Use a 3mm hex key to tighten the mounting screws in the sensor to mount the sensor on the housing. **Note that there is a correct and incorrect orientation for the sensor to be mounted on the flow meter.** Please see the AW Company website for documentation if you do not have it. The orientation is noted by the sensor's connector with respect to the outlet port of the flow meter.



JV-20CG w/ DH-B Shown

CROSS REFERENCE GUIDE FOR JV-XXCG SERIES SPARE PARTS

| Part - Qty. per meter [Drawing Ref. #] | JVM-01CG | JVM-10CG | JVM-15CG | JVM-20CG | JVM-30CG | JVM-60CG |
|---|--|--------------------------|--------------------------|--------------------------|--------------------------|--|
| Locating Pin - 2 [7] | AG15030 LP-CG Locating Pin | | | | | AG60030 LP-60CG Locating Pin |
| Shaft - 2 [5] | AG01020 ST-01CG Shaft | AG10020 ST-10CG Shaft | AG15020 ST-15CG Shaft | AG20020 ST-20CG Shaft | AG30020 ST-30CG Shaft | AG60020 ST-60CG Shaft |
| Gear w/ Insert - 2 [6] | AG01010 GR-01CG | AG10010 GR-10CG | AG15010 GR-15CG | AG20010 GR-20CG | AG30010 GR-30CG | AG60010 GR-60CG |
| Teflon O-Ring - 1 [8] | AG01040 COT-01CG | AG10040 COT-10CG | AG15040 COT-15CG | | | AG60080 - 2 pcs COT-60KG |
| Viton O-Ring - 1 [8] | AG01045 COV-01CG | AG10045 COV-10CG | AG15045 COV-15CG | | | AG60085 - 2 pcs COV-60KG |
| Bolts - 6 [2] | AG15060 - 6 pcs SC-M6x1-30mm | | | | | AG60050 - 12 pcs M10x70mm |
| Washers - 6 [3] | AG15065 Washer - M6 Hardened Washer | | | | | AG60055 - 12 pcs Washer - M10 Hardened Washer |

Table Format:

