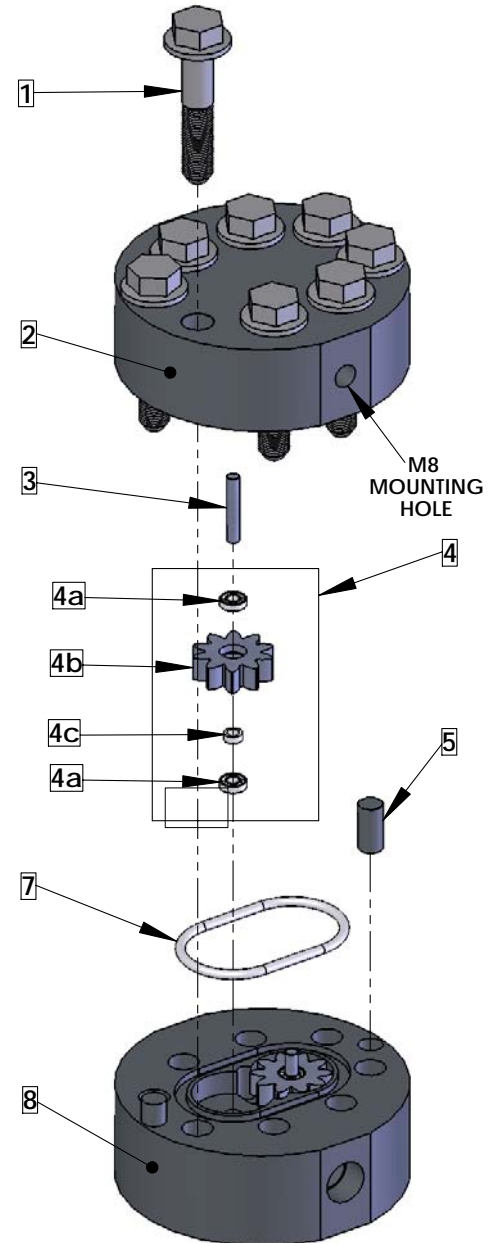


# MAINTENANCE GUIDE FOR THE JVHS-XXKG SERIES FLOW METER

Cleaning, inspecting or repairing a JVHS-KG Series gear flow meter is easily accomplished by following the procedures below.

1. The JVHS-xxKG series meters use Xylan coated M10 Hex Flange Bolts (1). Loosen them using a 15mm socket wrench. Keep the 2 opposing bolts near the Locating Pins (5) engaged by a few threads to avoid stress on the shafts and the locating pins during housing separation. **Please note the orientation of the Upper and Lower housings with respect to each other so that the meter is reassembled the same way.**
2. Holding the Upper Housing (2), gently tap on the top of the 2 opposing bolt heads to separate the Upper Housing (2) from the Lower Housing (8). **Do NOT use chisels or screwdrivers to split and pry apart the housings. This can cause damage to the meter bodies and meter internal parts.**
3. After separation, remove, clean and inspect the gear assemblies (4) and shafts (3). Clean out the o-ring groove, shaft holes and meter cavity.  
**IMPORTANT: The gear assembly consists of two bearings (4a), the Gear (4b), and a Bearing Spacer (4c). These parts are loosely fitted and can fall out. These parts are matched together and careful attention MUST be made to their orientation and location as they MUST be replaced the exact way they were.**
4. After cleaning all parts completely, the Gear Assemblies (4), Shafts (3) and Locating Pins (5) can be reinserted. Check for free and easy rotation of the gears.
5. Replace the O-Ring (7). Teflon o-rings should always be replaced. Viton o-rings can be reused if they are not damaged.
6. During reassembly keep the meter housings as parallel as possible. Make sure the housings are orientated the same way they were prior to disassembly.
7. Replace the Bolts (1). Torque the bolts to 24ft/lbs. **NOTE: Torque spec is for dry bolts. DO NOT lubricate bolts prior to installation.** Do not force the meter housings together. Do NOT use a hammer or other such device. Over tightening will not cause damage to the meter, but may fatigue the bolts and/or restrict the operation if internal surfaces are not completely clean.
8. After reassembly, gently blow air through the meter so the gears spin. This should be clearly audible given a moderate background noise level.



JVHS-20KG SHOWN

# CROSS REFERENCE GUIDE FOR JVHS-XXKG SERIES SPARE PARTS

Part - Qty. per meter [Drawing Ref. #]	JVHS-12KG	JVHS-20KG	JVHS-30KG
Locating Pin - 2 [5]	AG60030 LP-60CG Locating Pin		
Shaft - 2 [3]	AG12015 ST-12KG Shaft		AG30055 ST-30KG Shaft
Gear Assembly - 2 [4]	AG12010 GR-12KG	AG20040 GR-20KG	AG30050 GR-30KG
Teflon O-Ring - 1 [7]	AG12020 COT-12KG	AG15040 COT-15CG	
Viton O-Ring - 1 [7]	AG12025 COV-12KG	AG15045 COV-15CG	
Bolts - 8 [1]	BZ07000 M10x1.5 - 50mm with Xylan		

**Table Format:**

AG15030	←	AW Part #
LP-CG Locating Pin	←	AW Part Description